

Vermuyden School

This catalogue was digitised by The National Archives as part of the National Register of Archives digitisation project

NRA 43731

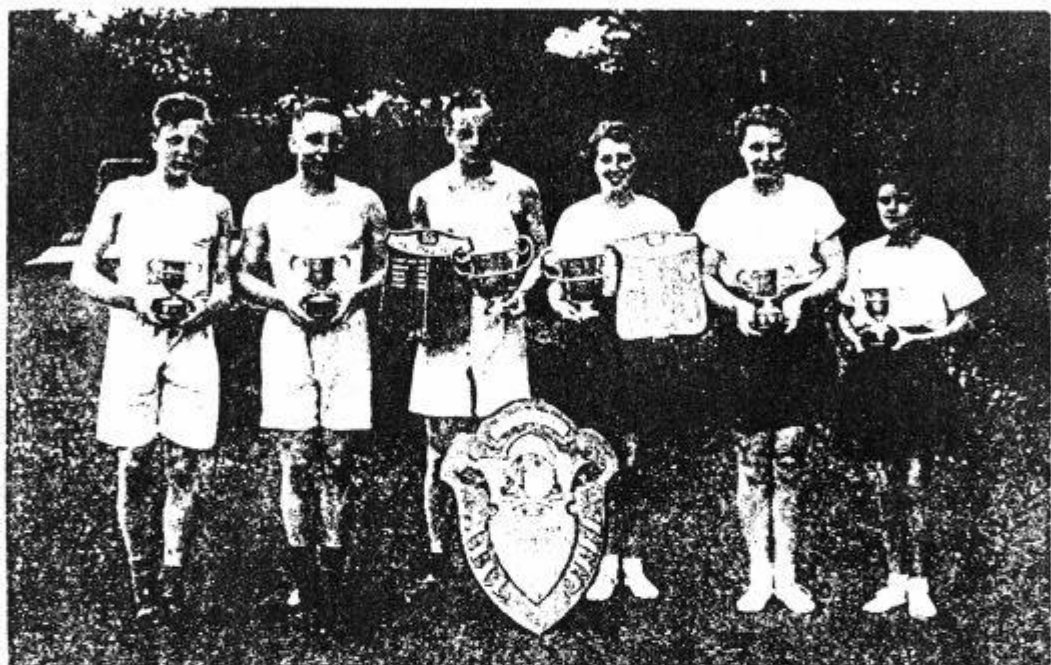


The National Archives

Received for BPA Olden Works Received in Archives
Passed on to reproduction by JBR 22/1/89

GOOLE GRAMMAR SCHOOL

ARCHIVES COLLECTION



GOOLE GRAMMAR SCHOOL

ARCHIVES COLLECTION

GOOLE GRAMMAR SCHOOL ARCHIVES

**Local History Archives Unit
Resource Guide No 7**

published by
Local History Archives Unit
Humberside College of Higher Education
Kennedy House, Inglemire Avenue
Hull
HU6 7LU

August 1988

by kind permission of
Mr E. Hoey
Headteacher Goole Grammar School

printed by
Reprographics
HCHE
Hull

ISBN 1 870001 27 3

GOOLE GRAMMAR SCHOOL ARCHIVES

in boxes in the library

Box 1

- Admission Register 904 - 1200 Goole Secondary School No 9217 - from 10.9.1919 (901) to 13.9.1922 (1200) incs loose letter from Goole Secondary School, 10 Victoria Street, Goole 26.5.1921 re appointment of Annie Walker as Bursar.

- document wallet, School Drama Productions - photographs 1940's - 1950's, incs one photo of Old Boys Rugby team 1959

- Admissions Register 1201 - 1500 Goole Secondary School No9217 from 14.9.1922 to 10.9.1924 (1500)

Admissions Register Goole Secondary School 1 - 300. 17.9.1906 - 30.1.1912 [Nol Dorothy Armitage, Bank Buildings, 54 Aire Street, Goole from Alexandra Street Provided School (Elem) to Knidergarten (sic) Training College, Bedford]

- Admission Register 601 - 897. 13.9.1916 (601) - 10.9.1919 (897)

Admission Register 301 - 600. Goole Secondary School 23.4.1912 (301) - 26.6.1903 (600)

Box 2

- School Memories. The Grammar School Goole 1950 photograph album (folder)

- text book "Elementary Classics. Euripides Medea". M.A. Bayfield MA MacMillan London 1900 (owners inscriptions on e.p. and f.e.p.)

- Cash Book. County Council of the West Riding of Yorkshire. Goole Secondary School Cash Book y/e 31.12.1912.

-"- y/e 31.3.1915

-"- y/e 31.12.1915

31.12.1918

31.3.1919

31.12.1920 and 1921

31.12.1922

Cash bk y/e 31.3.1923

31.12.1924

- Head Teachers Sales Account. Goole Grammar School Apl 1970 - Jan 1972
- W.R.C.C. Purchase Account Goole Grammar School Jul 1965 - Apl 1971
- W.R.C.C. Purchase Account GGS "Petty Cash" 1.4.1972 - 6.5.1974
- Head Teachers account GGS 25.10. 1968. - Mar 1970
- W.R.C.C. "Petty Cash" Account GGS 9.1.1970 - 31.3.1972
- County Council of the West Riding of Yorkshire. Head Teachers Statement of Receipts w/e. 26.10.1973 - 24.3.1974
- -"- Feb 1972 - Sept 1973
- file "Special Science Requisitions" Capital expenditure receipts c1963 - c1968 plus "Completed Items" (receipts) 1965
- file "Invoices Special Library Requisition" capital expenditure receipts c1964 - c1967
- W.R.C.C. "Petty Cash" Account GGS May 1957 - June 1970, plus loose correspondence re petty cash, plus School Transfer card Primary 1969/girl
- Bank Giro Credit duplicates 29.10.1974 -
 - 1.4.1974 -
 - 18.7.1975 -
 - 12.1.1976 -
 - 31.1.1975 -
 - 1.7.1974 -
- (in cloth money bag) Feb 1971 - July 1971
- Nov 1970 - Feb 1971
- Jan 1972 - Jun 1972
- Jun 1972 - Jan 1973
- Jan 1973 - Jun 1973
- Jul 1971 - Jan 1972
- Jun 1973 - Nov 1973
- Jan 1974 - Mar 1974
- Nov 1973 - Jan 1974

Box 3

- West Riding Education Committee Admission Register 6151 8.9.1960 - 6850 8.9.1964
- -"- 5411 2.5.1955. - 6150 8.9.1960

- W.R.C.C. Education Committee Secondary School Stock and Stores Book 1
GGS Aug 1939 - Jan 1966

- Statistics 1943 - 1944
- 1942 - 1943
- 1958 - 1959
- 1959 - 1960
- GGS -"- 1957 - 1958
- Statistics 1947 - 1948
- 1949 - 1950 "Headmasters copy"
- 1948 - 1949 -"-
- 1946 - 1947 -"-
- 1945
- 1944 - 1945

- file (folder) Caretaker 19-- - Aug 1975 duplicate "timesheets",
Overtime etc
- file (folder) T29 Steven W.A. Scruton, The Evolution of Europe from
1914-1958 (student's essay)
- file (folder) EEC essay plus "Goole Grammar School old pupils for
Record Purposes" names and addresses forms
- pamphlet C.C. of the W.R. of Y. Educ. Cttee. Regulations as to the
Absence from Duty of Teachers on the Permanent Staff PtII Apl 1961
- -"- Amendments to Nov 1961
- -"- Allowances and Additional payments in accordance with
the provisions of the Burnham Primary & Secondary Schools Report 1961 as
amended 1963 July 1964
- pamphlet C.C. of the W.R. of Yorkshire Educ. Dept. Scheme of
Allowances and Additional payments in accordance with the provisions of
the Burnham Primary & secondary Schools Report 1961 June 1962
- -"- -"- regulations as to Absence from duty of teachers on the
permanent Staff PartI... Sept 1961
- file (folder) student essay, Soviet Education Jayne Easten W5 plus
Viticulture France and Germany
- file (document wallet) "French Post" - Junior Sixth French...etc
"Junior Sixth Sheets"
- statistics 1950 - 1951
- [no title] statistics? ..left during 1951...
- statistics 1952 - 1953
- -"- 1953 - 1954
- medical lists 1954 - 1955 ("to be retained at the school in lieu of
duplicate medical cards")
- statistics 1954 - 1955
- medical lists 1955 - 1956
- statistics 1955 - 1956
- -"- 1956 - 1957
- medical lists 1957
- -"- 1958
- file (document wallet) "Entrants and leavers 1967 -8
- -"- "Final Form lists July 1972 top shets filed in this room"
- book "West Riding of Yorkshire Education Committee Handbook 1963
- file (document wallet) - untitled Educ Cttee corres. 1971/72 ... (?)
- -"- leavers forms 1973
- envelope "Receipts for Certificates" GCE Jan 1958 - (c?1966)

- exercise - book "Junior Debating Society" Spring Term 1960 - 25.10.1963
- file (document wallet) GGS Old pupils for Record Purposes
- "- -" -"
- "- -" -" UVWY
- loose papers, "certificate of clearance Sept 1972
- file (document wallet) Certificate of clearance Sept 1972
- file (doc wallet) entrants and leavers 1968/69
- "- -" Leavers certificates July 1971
- "- -" Fifth Form clearance 1971/72
- "- -" Leavers certificates 1971/72
- loose sheet, "Form 1d Room 10 Miss Johns Sept 1942 (list of pupils)

Box 4

- lever arch file - duplicate "memos" (?) 1953-1964 eg "Distribution of School Milk", "Record Cards", "Staff Absences", GGSchool Parent Teachers Assoc. etc
- C.C. of the W.R. of Y. Higher Education Staff Salaries Oct 1940 - Mar 1944
- W.R. Educ Cttee Admission Register 4661 12.9.1949 - 5410 31.12.1941
- box file - newscuttings - Times 1977/78 "Law"
- envelope - publicity posters Crucible Theatre Sheffield 1983/4
- book, disbound, "Old England" vol I (part)
- book, "Old England - A museum of popular Antiquities" vol II Charles Knight, James Sangster & Co, London n/d
- book, The Graphic - disbound 4.1.1873 - 25.12.1872.

- "Log Book" (pencil note - "Goole St John's Girls? R.B." 1934 - 24.3.1937 (28pp only of 302pp book) - last entry 24.3.1937 "All the stationery, needlework, and Junior Reading Books and physical training apparatus have been sent to Alexandra St. Council Girls' The schools have closed finally today. The children go to various Schools after Easter Alexandra Girls' Boothferry Road Girls' and the Senior Girls. Average for the year 65 Percentage for the year 91.54"

- record book - "Upkeep of Grounds" 1957 - 1965 (a/c book)
- box file - incs file, Post sheets Apl 1975 - March 1976 and duplicate Requisitions 1965 - 1967
- box of loose papers - memos etc 1972 -1975 eg "Lower School registers 1975" "Common Room notice" etc
- box file "Jubilee Letters 1959, incs correspondence and ephemera eg GGS 1909-1959 Jubilee Dinner Sat 18.7.1959 Menu and invitation card. Thanksgiving Service in Goole Parish church Order of Service. Hampton GS 4th Centenary Celebrations 1957. "Progress in Malaya" by T. and A. Dufton (booklet). Circular addressed to "Dear Old Pupil..." etc

- booklet (binder) West Riding of Yorkshire Education Cttee Appendices to Handbook "office copy" c1963 - c1967 incs map of County of W.R. of Y Educ Divisional Areas.
- (school magazine) The Viking vol IV no 10 June 1955

- form SC6 C.C. of the W.R. of Y Educ Dept School Meals Service - Meals Register GG class Free Apl 1974 - July 1974
- "- Masters Sept 1973 - July 1974
- Meals Register Mistresses Sept 1973 - July 1974
- "- Staff Dinners. duty only Sept 1971 - July 1972
- "- Free Dinners Pupils Sept 1971 - July 1972
- "- Headmaster Sept 1972 - July 1973
- "- Free Students Sept 1973 - Apl 1974
- "- Free Dinners Staff Sept 1972 - July 1973
- "- Headmasters guests etc Sept 1971 - July 1972

Box 5 "Exams"

- file, examination papers June 1972
- file, Oxford School certificate Examination July 1932 Oxford senior local Examination March 1917 (list of results)
- file, CSE 1970 - 1976
- file, Transfer Examination Arithmetic and English papers 1959
- ruled book - general Certificate of Educ 1954 - 1966
- file, Examination papers June 1973
- file, prelim exams 1969
- file, examination papers Summer 1970
- box file, CSE Exam papers 1965 - 1970
- box file, GCE exam papers 1965 - 1972

Box 6

- loose photographs - eg Hockey team, Back View playing field, Physics lab, Laundry etc (some of older photographs in very poor state of preservation)

Box 7

- loose photographs - large, mounted on board incs
- Girls hockey Team n/d
- Goole Sec School Hockey Team 1912-13 - photo by Powles & Briggs Boothferry Road, Goole
- (modern) Girls tennis n/d. no names. Norman Burnitt, Central Studios, Goole
- Rugby Team - "Goole Secondary School 1928-29"
- Girls Hockey Team - "Goole Secondary School Hockey Team Season 1909-1910" Powles & Briggs, Boothferry Road, Goole
- Girls Hockey Team n/d. no names
- Girls Hockey Team Goole Secondary School 1924-25 (signed "S.E. Taylor")
- Girls Hockey Team "Goole Secondary School Hockey Team 1911-12" Powles & Briggs Boothferry Road, Goole
- Cricket Team n/d Powles & Briggs Boothferry Road, Goole

- (photograph) Cricket Team "Goole Secondary School 1923"
- "- Rugby Team "Goole Secondary School 1927-28"

- booklet, West Riding of Yorkshire County Services Handbook (1961?)
- "The Viking" July 1968
- box file - file, Minutes of GGS governors 1958
- "- 1957
- 1956
- 1955
- 1954
- 1953
- 1952
- 1951
- - typescript, "Innovations in RB Calder @ GGS since 1931"
- - leaflet, C.C. of The W.R. of Y. "Arrangement for the constitution of a single governing Body for Grouped County 2ndary Schools
- single dble sided sheet "Opening of the G Sec School" The Goole Times 22.4.1910.
- box file (incs) Typescript GGS A Report to the Governors Fri 12.5.1967.
- Governors 1966 - minutes
- GGS prospectus n/d (post 1965)
- Governors 1965 minutes
- Governors 1964 minutes
- box file - Governors July 1971 - Feb 1975
- box file "Governors 1959-1963" (incs) files "Odds & Ends" 1961 -62
- Governors meetings Minutes 1963
- "- 1962
- "- 1961
- "- 1960
- Governors Misc + 1959
- box file Governors 1968 - 197-
- (incs) letter to The Headmaster 13.5.1940 from Board of Educ London, re missing Admission Register sheets

Box 8

- Box file (incs Form Lists 1969
- Statistics 1970
- folder 1970 "Form 7"
- "- Sept '70 - to July '71
- loose papers, Form Lists 1969
- Statistics Sept 1969
- loose papers, 1967/1968 (Educ Dept forms)
- "The Viking" Vol IV no2 Spring 1947
- loose papers, Corres with JMB 1972
- WRCC Educ Cttee Schools Bulletin Sept 1949 (newsletter)
- file (folder) JMB 1976 -1972
- "- CSE Circulars + Syllabuses 1972 - 1974
- ("The West Yorkshire and Lindsey Regional Examining Board)
- "- CSE Results July 1966 - 1970

- file (folder) NVJMB JMB Circulars 1973 - 1975
- students essay 'Soviet Agriculture' Deborah Lockwood
- file (folder) (GED O Level 1971 GED A Level 1971 Prelims
{ A Level Elements of Engineering Science 1971
- file (folder) Mock GCE Exam Papers 1970
- Envelope, AEB 1973
- loose papers, various exam papers
- file (folder) Prelim exams Feb 1973

- Goole Secondary School Minute book (hd backed binder)
Report of meeting of the Governors 24.4.1942 -
- GGS Meeting of the Governing Body 26.11.1943.
- West Riding County Council Educ Cttee Schools Bulletin July 1948 -
March 1965 [not checked if complete run]

Framed Photographs [about 30]

Leather Bound Photograph Album GGS 1930 - 31

(incs School Sports 1931)

Inter School Sports 1932

Sports Day 1933/Sports Day 1934

Form photographs 1934/Gym/Labs/Cookery Room ...etc

Cricket XI/Hockey XI/ Rounders/ Tennis ...etc

Charter Day 1933 Sports Day 1934 Photo Competition....

1934/35/ "The Critic" drama group Speech Day 1935

Sports Day 1935/36 Historical Pageant 1936 Sports Day 1937

School Camp 1937, Inter School Sports 1938, Speech Day 1938...

[approx 325 photographs in total]

Box 9

Architects plans "Plans For Local Schools 1930's - 1960's"

- drawing, Goole GS extensions 2nd/ 3rd floor plan Art Room 18.9.1959
416/50 G.L.Thompson FRIBA chartered architect 46a Coney St York. plan
- drawing, Goole GS extensions Sections A.A. and B.B. No 416/55A 12.10.
1959 cold. plan
- drawing, Goole GS extensions Elevations NW and NE 416/51 18.9.1959.
plan
- drawing, Goole GS part First Floor Plan 416/44 Aug 1959 cold. plan
- drawing, Goole GS extensions 2nd Third and roof plan Art Room 416/50
18.9.1959 cold. plan
- OS 237/16/1907 plan refered to Goole School site OS copy 7.1.1964
- OS 237/11 -"- Airmyn proposed J & I School site OS
copy 11.1.1962
- 242/4/1906 -"- GOOLE - Old Goole Sec School site +
corres. re Goole Marshland proposed Modern School
- dwg. Goole Boothferry Road School reps to playgrounds Dwg No ESP 640/1
Hubert Bennett FRIBA W.R. County Architet, Wakefield Oct 1950
- 237/16/1907 plan refered to Goole New Junior mixed School Infants +
Nursery site OS copy 6.7.1948
- 237/16/1907 plan refered to Goole Modern School Playing Field OS copy
16.8.1949

- Dwg. Rawcliffe in Snaith Primary School A.W.Glover FRIBA W.R.Co Archt Nov 1960
- plan Plan refered to Stainforth 19.6.1951.
- folder of plans/drawings WRCC 1957-58 Programme Thorne South Common Infants School (2 F.E.) preliminary plans

Box 10

- box file, DES corres 1964 1965 (loose circulars)
- box file, Church of England Bd. of Educ. corres. 1964 (loose circulars etc)
- "- folder Statistics 1963 - 1964
- "- "- 1962 - 1963
- 1961 - 1962
- 1960 - 1961
- 1959 - 1960
- 1958 - 1959
- 1957 - 1958
- 1956 - 1957
- 1955 - 1956
- 1954 - 1955
- 1953 - 1954
- 1952 - 1953
- 1951 - 1952
- 1950 - 1951
- box file, Corres. Headmaster/ Educ Dept etc 1969
- box file, West Riding Circulars 1939 - 1942 + newscuttings etc
- box file, Statistics 1964/5 to July 1967 + corres.
- "- 1965/66
- "- 1964/65

Box 11

- envelope WRCC "Schools Bulletin" Historical Records
- "- Jan 1966 - March 1974 + Index 1966/67
- envelope Rawcliffe and Snaith District Sub Cttee Minutes 1932 - 1935
- Book (Minute Book) WRCC Educ Cttee Min Bk Goole District Sub Cttee 3.7.1925 - 27.1.1933.
- WRCC Educ Cttee Min Bk Rawcliffe and Snaith Educ Sub Cttee District Sub Cttee (Snaith) 25.9.1922 - 22.2.1932
- Blind Persons Act 1920 Goole, Thorne and Selby Area (Accounts) 18.10.1926 - 27.5.1931
- WRCC Educ Cttee Min Bk Goole & District Sub Cttee 20.9.1918 - 3.7.1925
- WRCC Educ Cttee Min Bk 6.5.1904 - 26.5.1910
- Divisional Clerks Staff Register Goole District Sub Cttee 1.9.1895 - 1.10.1927
- Divisional Clerks Staff Register Rawcliffe & Snaith 1.4.1928 - 18.7.1949

- WRCC Educ Cttee Min Book Swinefleet & Reedness Dist Sub Cttee
22.4.1904 - 24.9.1915
- Wages Book GGS from w/e 3.2.1939 - w/e 4.12.1942
- "Record of Police Court Proceedings for Combined District of Rawcliffe & Snaith and Swinefleet & Reedness from 1904 to" [handwritten label on cover - but inside is] "Stock & Stores Account" [not used as this]
12.1.1905 - 24.9.1928 [hearings into irregular attendance, plus loose individual corres re same 1938, 1939]
- WRCC Educ Cttee Minute Book Swinefleet & Reedness District Sub cttee [minute book] 26.2.1926 - 25.1.1935
- WRCC Educ Cttee Minute Book Rawcliffe & Snaith District Sub Cttee Minute Book of Rawcliffe & Snaith Educ Sub Cttee 4.1.1915 - 4.9.1922
- Divisional Clerks Staff Register Swinefleet & Reedness District Sub Cttee 1.9.1905 - 18. 5.1925
- envelope Mins of Carlton (Snaith) District Sub Cttee accounts 7.9.1943 - (incs)
Accounts etc 27.3.1945 7.)
- 25.1.1943 - 26.3.1945
Mins of Rawcliffe and Snaith Dist Sub Cttee Rawcliffe
- 25.10.1946
Mins of Swinefleet & Reedness Dist Sub Cttee 29.1.1943 -
Mins of Governing body of GGS 13.2.1940 - 20.4.1945

listed by Christopher Ketchell
Local History Archives Unit
Humberside College of Highedr Education
Hull

at Goole Grammar School
Centenary Road
Goole

17th May 1988